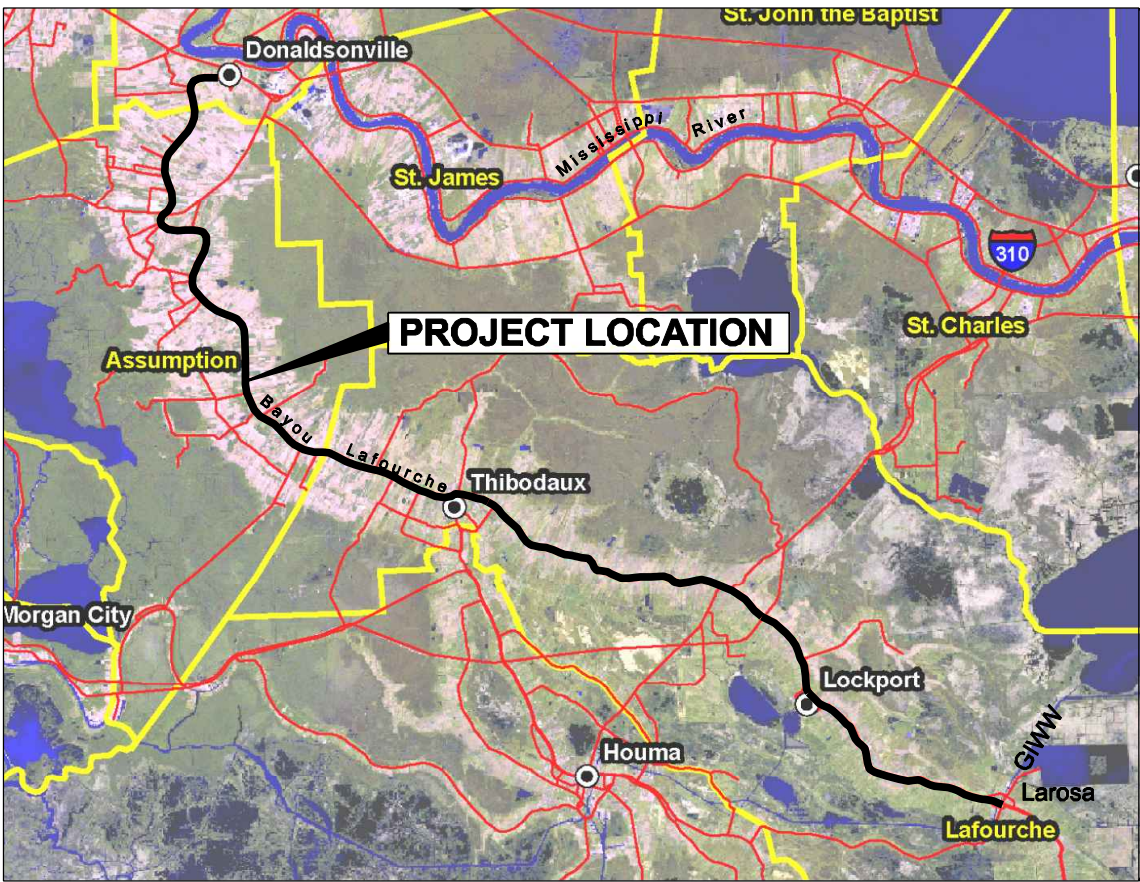


THE LOUISIANA OFFICE OF STATE LANDS

BAYOU LAFOURCHE
LOUISIANA OFFICE OF STATE LANDS
SUPPORT FROM DONALDSONVILLE TO GIWW
ASCENSION, ASSUMPTION, AND LAFOURCHE PARISHES

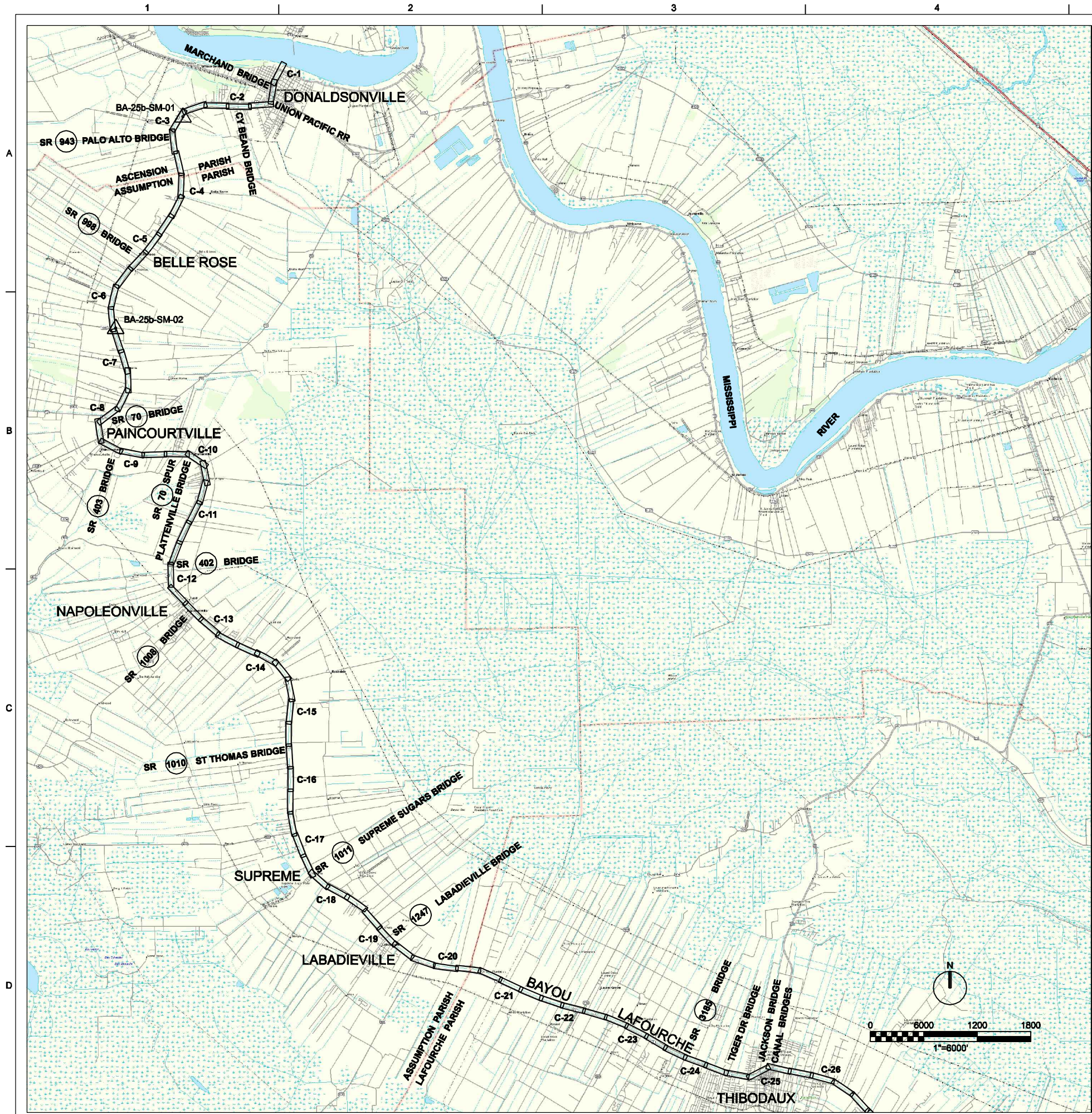


VICINITY MAP
NTS

JANUARY 2011

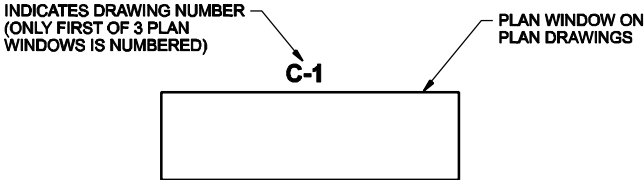


BAYOU LAFOURCHE LOUISIANA OFFICE OF STATE LANDS SUPPORT FROM DONALDSONVILLE TO GIWW		GENERAL		COVER SHEET AND VICINITY MAP	
LOUISIANA OFFICE OF STATE LANDS P. O. BOX 44124 BATON ROUGE, LOUISIANA 70804		CH2MHILL		REUSE OF DOCUMENTS: THIS DOCUMENT, AND THE IDEAS AND DESIGNS INCORPORATED HEREIN, AS AN INSTRUMENT OF PROFESSIONAL SERVICE, IS THE PROPERTY OF CH2M HILL AND IS NOT TO BE USED, IN WHOLE OR IN PART, FOR ANY OTHER PROJECT WITHOUT THE WRITTEN AUTHORIZATION OF CH2M HILL.	
				APVR	BY
				DESCRIPTION	REVISION
				NO	REV
				DATE	DATE
DATE NOVEMBER 2010					
DWG		G-1			
SHEET		1 OF X			
		DR		K SILVA	
		DSGN		B MEMEO	
		CHK		D HARRIS	
		APVD		T CANCIENNE	

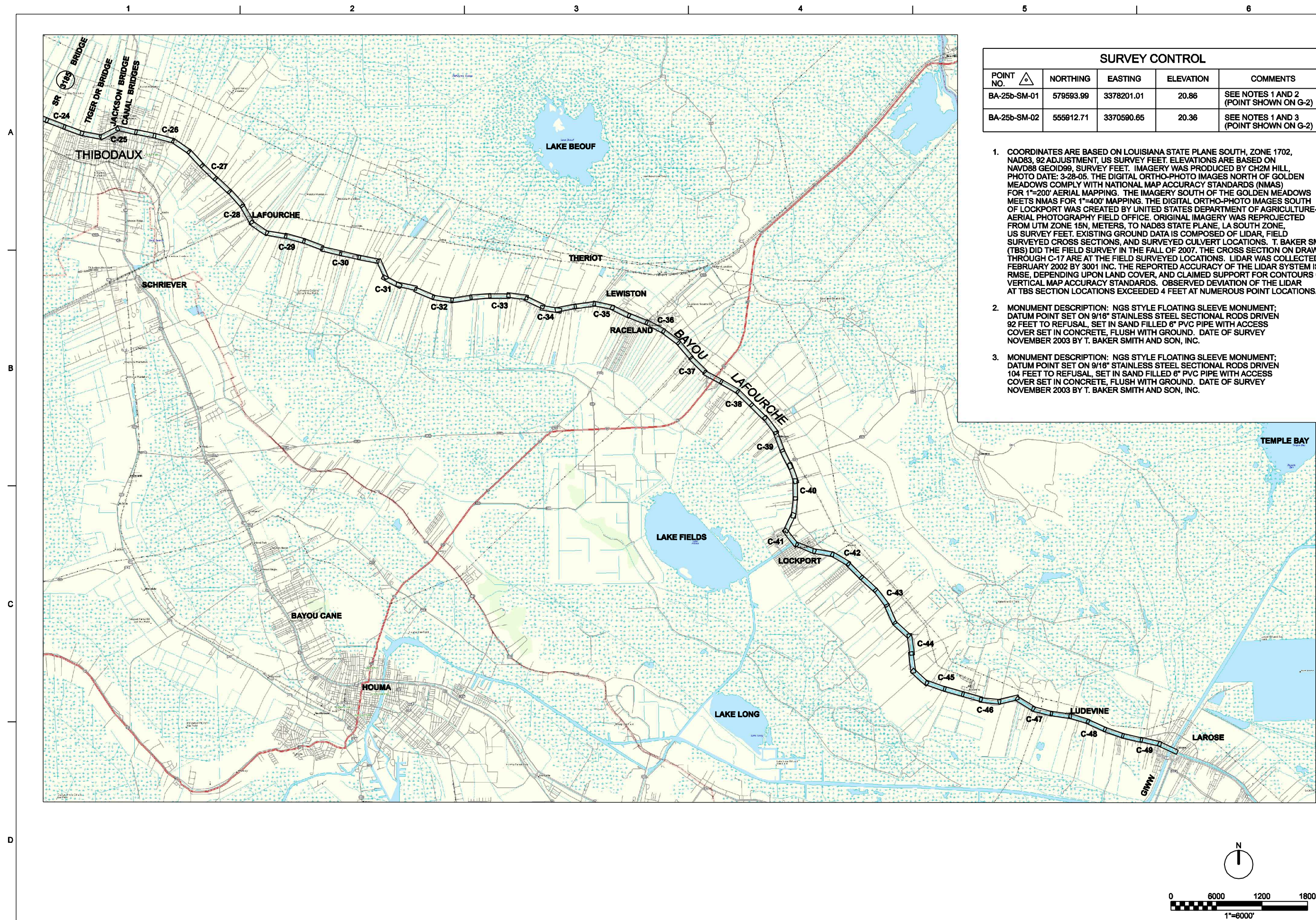



INDEX TO DRAWINGS

GENERAL		TITLE
SHEET		COVER SHEET AND VICINITY MAP
DWG		KEY PLAN AND INDEX TO DRAWINGS
		KEY PLAN AND SURVEY CONTROL
CIVIL		
4	C-1	PLAN STA 20+79 TO STA 77+00
5	C-2	PLAN STA 77+00 TO STA 152+00
6	C-3	PLAN STA 152+00 TO STA 227+00
7	C-4	PLAN STA 227+00 TO STA 302+00
8	C-5	PLAN STA 302+00 TO STA 377+00
9	C-6	PLAN STA 377+00 TO STA 451+00
10	C-7	PLAN STA 451+00 TO STA 522+00
11	C-8	PLAN STA 522+00 TO STA 592+00
12	C-9	PLAN STA 592+00 TO STA 667+00
13	C-10	PLAN STA 667+00 TO STA 732+00
14	C-11	PLAN STA 732+00 TO STA 806+00
15	C-12	PLAN STA 806+00 TO STA 882+00
16	C-13	PLAN STA 882+00 TO STA 957+00
17	C-14	PLAN STA 957+00 TO STA 1027+00
18	C-15	PLAN STA 1027+00 TO STA 1102+00
19	C-16	PLAN STA 1102+00 TO STA 1179+00
20	C-17	PLAN STA 1179+00 TO STA 1250+00
21	C-18	PLAN STA 1250+00 TO STA 1325+00
22	C-19	PLAN STA 1325+00 TO STA 1401+00
23	C-20	PLAN STA 1401+00 TO STA 1478+00
24	C-21	PLAN STA 1478+00 TO STA 1558+00
25	C-22	PLAN STA 1558+00 TO STA 1630+00
26	C-23	PLAN STA 1630+00 TO STA 1704+00
27	C-24	PLAN STA 1704+00 TO STA 1778+00
28	C-25	PLAN STA 1778+00 TO STA 1853+00
29	C-26	PLAN STA 1853+00 TO STA 1928+99
30	C-27	PLAN STA 1928+00 TO STA 2003+00
31	C-28	PLAN STA 2003+00 TO STA 2078+00
32	C-29	PLAN STA 2078+00 TO STA 2155+00
33	C-30	PLAN STA 2155+00 TO STA 2228+00
34	C-31	PLAN STA 2228+00 TO STA 2297+00
35	C-32	PLAN STA 2297+00 TO STA 2372+00
36	C-33	PLAN STA 2372+00 TO STA 2445+00
37	C-34	PLAN STA 2445+00 TO STA 2514+00
38	C-35	PLAN STA 2514+00 TO STA 2588+00
39	C-36	PLAN STA 2588+00 TO STA 2664+00
40	C-37	PLAN STA 2664+00 TO STA 2740+00
41	C-38	PLAN STA 2740+00 TO STA 2815+00
42	C-39	PLAN STA 2815+00 TO STA 2885+00
43	C-40	PLAN STA 2885+00 TO STA 2953+00
44	C-41	PLAN STA 2953+00 TO STA 3024+00
45	C-42	PLAN STA 3024+00 TO STA 3099+00
46	C-43	PLAN STA 3099+00 TO STA 3175+00
47	C-44	PLAN STA 3175+00 TO STA 3245+00
48	C-45	PLAN STA 3245+00 TO STA 3320+00
49	C-46	PLAN STA 3320+00 TO STA 3394+00
50	C-47	PLAN STA 3394+00 TO STA 3468+00
51	C-48	PLAN STA 3468+00 TO STA 3543+00
52	C-49	PLAN STA 3543+00 TO STA 3885+34



LOUISIANA OFFICE OF STATE LANDS P. O. BOX 44124 BATON ROUGE, LOUISIANA 70804			BAYOU LAFOURCHE LOUISIANA OFFICE OF STATE LANDS SUPPORT FROM DONALDSONVILLE TO GIWW			DR		
CH2MHILL			GENERAL			DSGN		
						CHK		
			KKEY PLAN AND INDEX TO DRAWINGS			APVD		
						T CANCEINNE		
						M BISHOP		
						B MEMEO		
						D HARRIS		
						APVD		
						T CANCEINNE		
</								



SURVEY CONTROL				
POINT NO. 	NORTHING	EASTING	ELEVATION	COMMENTS
BA-25b-SM-01	579593.99	3378201.01	20.86	SEE NOTES 1 AND 2 (POINT SHOWN ON G-2)
BA-25b-SM-02	555812.71	3370590.65	20.36	SEE NOTES 1 AND 3 (POINT SHOWN ON G-2)

1. COORDINATES ARE BASED ON LOUISIANA STATE PLANE SOUTH, ZONE 1702, NAD83, 92 ADJUSTMENT, US SURVEY FEET. ELEVATIONS ARE BASED ON NAVD88 GEOID99, SURVEY FEET. IMAGERY WAS PRODUCED BY CH2M HILL, PHOTO DATE: 3-28-05. THE DIGITAL ORTHO-PHOTO IMAGES NORTH OF GOLDEN MEADOWS COMPLY WITH NATIONAL MAP ACCURACY STANDARDS (NMAS) FOR 1"-200' AERIAL MAPPING. THE IMAGERY SOUTH OF THE GOLDEN MEADOWS MEETS NMAS FOR 1"-400' MAPPING. THE DIGITAL ORTHO-PHOTO IMAGES SOUTH OF LOCKPORT WAS CREATED BY UNITED STATES DEPARTMENT OF AGRICULTURE- AERIAL PHOTOGRAPHY FIELD OFFICE. ORIGINAL IMAGERY WAS REPROJECTED FROM UTM ZONE 15N, METERS, TO NAD83 STATE PLANE, LA SOUTH ZONE, US SURVEY FEET. EXISTING GROUND DATA IS COMPOSED OF LIDAR, FIELD SURVEYED CROSS SECTIONS, AND SURVEYED CULVERT LOCATIONS. T. BAKER SMITH (TBS) DID THE FIELD SURVEY IN THE FALL OF 2007. THE CROSS SECTION ON DRAWINGS C-1 THROUGH C-17 ARE AT THE FIELD SURVEYED LOCATIONS. LIDAR WAS COLLECTED IN FEBRUARY 2002 BY 3001 INC. THE REPORTED ACCURACY OF THE LIDAR SYSTEM IS 15-30 cm RMSE, DEPENDING UPON LAND COVER, AND CLAIMED SUPPORT FOR CONTOURS OF 1'-2' VERTICAL MAP ACCURACY STANDARDS. OBSERVED DEVIATION OF THE LIDAR AT TBS SECTION LOCATIONS EXCEEDED 4 FEET AT NUMEROUS POINT LOCATIONS.
2. MONUMENT DESCRIPTION: NGS STYLE FLOATING SLEEVE MONUMENT; DATUM POINT SET ON 9/18" STAINLESS STEEL SECTIONAL RODS DRIVEN 92 FEET TO REFUSAL, SET IN SAND FILLED 6" PVC PIPE WITH ACCESS COVER SET IN CONCRETE, FLUSH WITH GROUND. DATE OF SURVEY NOVEMBER 2003 BY T. BAKER SMITH AND SON, INC.
3. MONUMENT DESCRIPTION: NGS STYLE FLOATING SLEEVE MONUMENT; DATUM POINT SET ON 9/18" STAINLESS STEEL SECTIONAL RODS DRIVEN 104 FEET TO REFUSAL, SET IN SAND FILLED 6" PVC PIPE WITH ACCESS COVER SET IN CONCRETE, FLUSH WITH GROUND. DATE OF SURVEY NOVEMBER 2003 BY T. BAKER SMITH AND SON, INC.

DATE NOVEMBER 2010						LOUISIANA OFFICE OF STATE LANDS P. O. BOX 44124 BATON ROUGE, LOUISIANA 70804		BAYOU LAFOURCHE LOUISIANA OFFICE OF STATE LANDS SUPPORT FROM DONALDSONVILLE TO GIWW			
DWG		G-3						GENERAL			
SHEET		3		OF		X		KEY PLAN AND SURVEY CONTROL			
				NO		DATE		DESCRIPTION		DR	
				REV		DATE		REVISION		DSGN	
										B MEMEO	
										CHK	
										D HARRIS	
										APVD	
										T CANCIENNE	